



Proposed Bridge Upgrade_BSP

Legend

BSP ESA: Restore

ESA2: Restore where appropriate (CT)

BSP ESA

ESA: Aquatic

ESA: Terrestrial

Map Center: Lon: 18°22'41.9"E
 Lat: 34°1'19.6"S

Scale: 1:9 028

Date created: February 24, 2022

Source: Esri, Maxar, GeoEye, Earthstar Geographics, CNES/Airbus DS, USDA, AeroGRID, IGN, and the GIS User Community
 Esri, HERE, Garmin, © OpenStreetMap contributors, and the GIS User community
 CapeNature, DEA

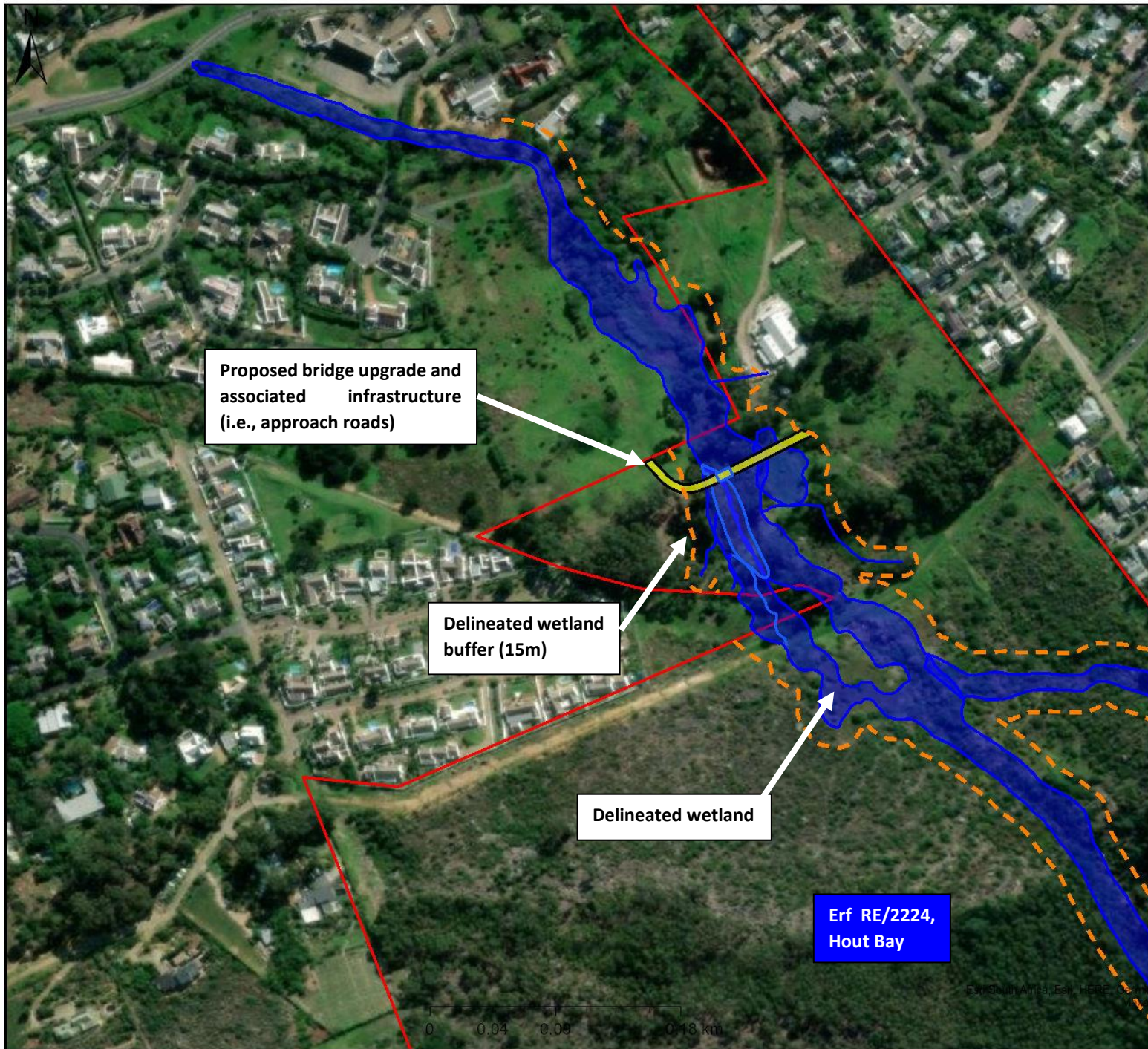


Western Cape Government
FOR YOU

Agriculture

Proposed Upgrade of Oakhurst Bridge_

Legend



Map Center: Lon: 18°22'38.7"E
Lat: 34°1'20.7"S

Scale: 1:4 514

Date created: September 14, 2022



Western Cape
Government
FOR YOU

Agriculture



Proposed Bridge Upgrade_Vegetation

Legend

VEGMAP 2018

- FFg 3 Peninsula Granite Fynbos
- FFs 9 Peninsula Sandstone Fynbos

Proposed bridge upgrade and associated infrastructure (i.e., approach roads)

Map Center: Lon: 18°22'35.7"E
 Lat: 34°1'20.2"S
Scale: 1:9 028
Date created: February 24, 2022

Source: Esri, Maxar, GeoEye, Earthstar Geographics, CNES/Airbus DS, USDA, USGS, AeroGRID, IGN, and the GIS User Community
 Esri, HERE, Garmin, (c) OpenStreetMap contributors, and the GIS user community
 DAFF





Proposed bridge upgrade and associated infrastructure (i.e., approach roads)

Proposed Bridge Upgrade_Protected

Legend

 BSP Protected Areas

Map Center: Lon: 18°22'39.2"E
Lat: 34°1'19.6"S

Scale: 1:36 112

Date created: February 24, 2022

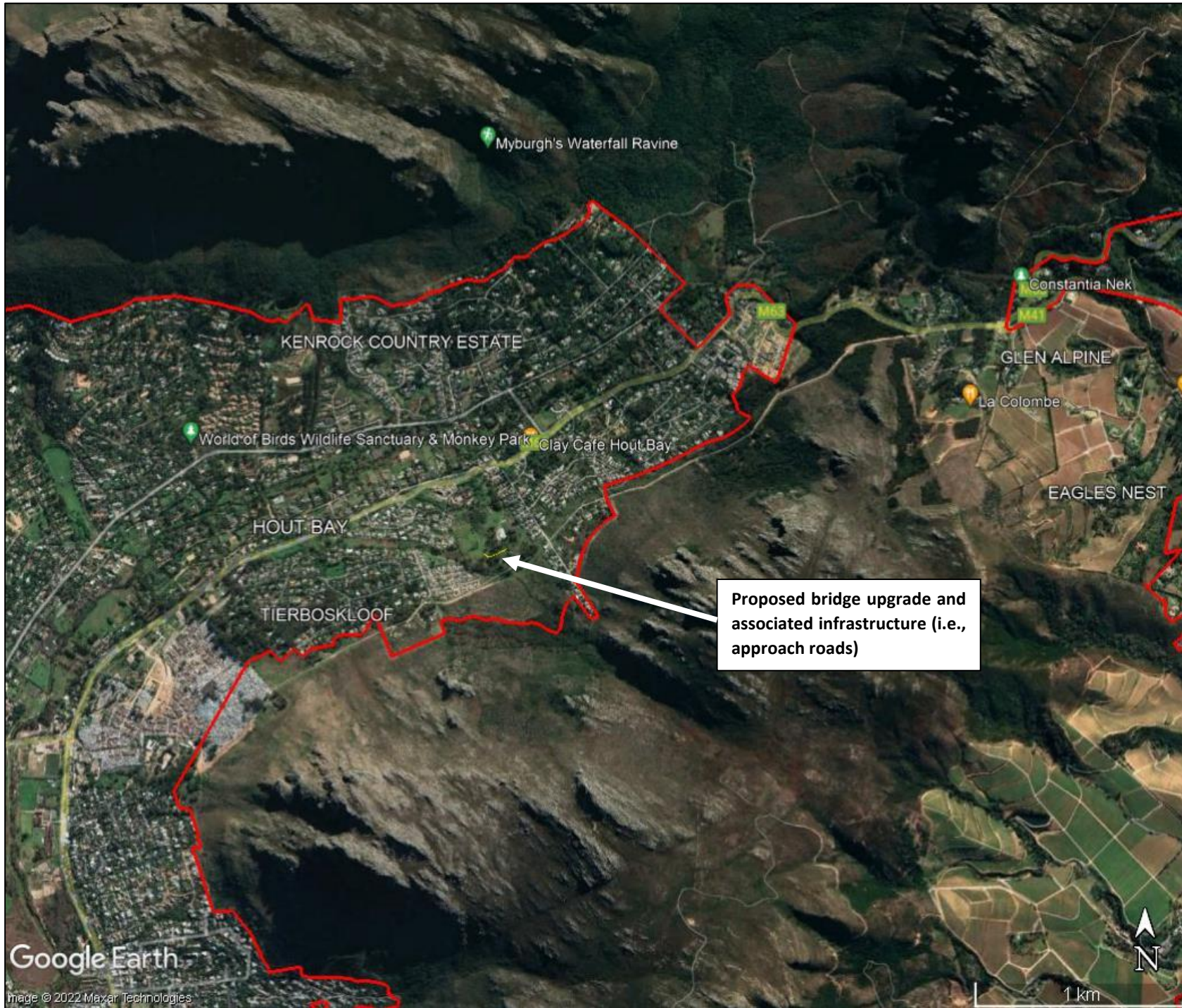


Western Cape
Government

FOR YOU

Agriculture

Source: Esri, Maxar, GeoEye, Earthstar Geographics, CNES/Airbus DS, USDA, USGS, AeroGRID, IGN, and the GIS User Community
Esri, HERE, Garmin, (c) OpenStreetMap contributors, and the GIS user Community
CapelNature, DEA



Myburgh's Waterfall Ravine

KENROCK COUNTRY ESTATE

Constantia Nek

GLEN ALPINE

World of Birds Wildlife Sanctuary & Monkey Park
Clay Cafe Hout Bay

La Colombe

HOUT BAY

EAGLES NEST

TIERBOSKLOOF

Proposed bridge upgrade and associated infrastructure (i.e., approach roads)

Google Earth

Image © 2022 Maxar Technologies



1 km