

**SCREENING REPORT FOR AN ENVIRONMENTAL AUTHORIZATION AS
REQUIRED BY THE 2014 EIA REGULATIONS – PROPOSED SITE
ENVIRONMENTAL SENSITIVITY**

EIA Reference number: 070845

Project name: Oakhurst

Project title: Oakhurst

Date screening report generated: 28/05/2024 15:50:58

Applicant: Oakhurst Lifestyle Estate (Pty) Ltd

Compiler: Sillito Environmental Consulting

Compiler signature:
.....

Application Category: Any activities within or close to a watercourse



Table of Contents

Proposed Project Location	3
Orientation map 1: General location	3
Map of proposed site and relevant area(s)	4
Cadastral details of the proposed site	4
Wind and Solar developments with an approved Environmental Authorisation or applications under consideration within 30 km of the proposed area	4
Environmental Management Frameworks relevant to the application	4
Environmental screening results and assessment outcomes	4
Relevant development incentives, restrictions, exclusions or prohibitions	5
Proposed Development Area Environmental Sensitivity	5
Specialist assessments identified	5
Results of the environmental sensitivity of the proposed area	7
MAP OF RELATIVE AGRICULTURE THEME SENSITIVITY	7
MAP OF RELATIVE ANIMAL SPECIES THEME SENSITIVITY	8
MAP OF RELATIVE AQUATIC BIODIVERSITY THEME SENSITIVITY	9
MAP OF RELATIVE ARCHAEOLOGICAL AND CULTURAL HERITAGE THEME SENSITIVITY	9
MAP OF RELATIVE CIVIL AVIATION THEME SENSITIVITY	10
MAP OF RELATIVE DEFENCE THEME SENSITIVITY	11
MAP OF RELATIVE PALEONTOLOGY THEME SENSITIVITY	12
MAP OF RELATIVE PLANT SPECIES THEME SENSITIVITY	13
MAP OF RELATIVE TERRESTRIAL BIODIVERSITY THEME SENSITIVITY	16

Proposed Project Location

Orientation map 1: General location

General Orientation: Oakhurst

Unable to obtain map image.

OFFICIAL

Map of proposed site and relevant area(s)

Unable to obtain map image.

Cadastral details of the proposed site

Property details:

No	Farm Name	Farm/ Erf No	Portion	Latitude	Longitude	Property Type
1	HOUT BAY	2224	0	34°1'41.1S	18°22'49.63E	Erven
2	HOUT BAY	7998	0	34°1'29.9S	18°22'30.83E	Erven

Development footprint¹ vertices:
No development footprint(s) specified.

Wind and Solar developments with an approved Environmental Authorisation or applications under consideration within 30 km of the proposed area

No nearby wind or solar developments found.

Environmental Management Frameworks relevant to the application

No intersections with EMF areas found.

Environmental screening results and assessment outcomes

The following sections contain a summary of any development incentives, restrictions, exclusions or prohibitions that apply to the proposed development site as well as the most environmental

¹ "development footprint", means the area within the site on which the development will take place and includes all ancillary developments for example roads, power lines, boundary walls, paving etc. which require vegetation clearance or which will be disturbed and for which the application has been submitted.

sensitive features on the site based on the site sensitivity screening results for the application classification that was selected. The application classification selected for this report is:
Any activities within or close to a watercourse.

Relevant development incentives, restrictions, exclusions or prohibitions

The following development incentives, restrictions, exclusions or prohibitions and their implications that apply to this site are indicated below.

Incentive, restriction or prohibition	Implication
Strategic Transmission Corridor-Central corridor	https://screening.environment.gov.za/ScreeningDownloads/DevelopmentZones/Combined_EGI.pdf
South African Protected Areas	https://screening.environment.gov.za/ScreeningDownloads/DevelopmentZones/SAPAD_OR_2023_Q4_Metadata.pdf

Proposed Development Area Environmental Sensitivity

The following summary of the development site environmental sensitivities is identified. Only the highest environmental sensitivity is indicated. The footprint environmental sensitivities for the proposed development footprint as identified, are indicative only and must be verified on site by a suitably qualified person before the specialist assessments identified below can be confirmed.

Theme	Very High sensitivity	High sensitivity	Medium sensitivity	Low sensitivity
Agriculture Theme		X		
Animal Species Theme		X		
Aquatic Biodiversity Theme	X			
Archaeological and Cultural Heritage Theme	X			
Civil Aviation Theme			X	
Defence Theme			X	
Paleontology Theme				X
Plant Species Theme			X	
Terrestrial Biodiversity Theme	X			

Specialist assessments identified

Based on the selected classification, and the known impacts associated with the proposed development, the following list of specialist assessments have been identified for inclusion in the assessment report. It is the responsibility of the EAP to confirm this list and to motivate in the assessment report, the reason for not including any of the identified specialist study including the provision of photographic evidence of the site situation.

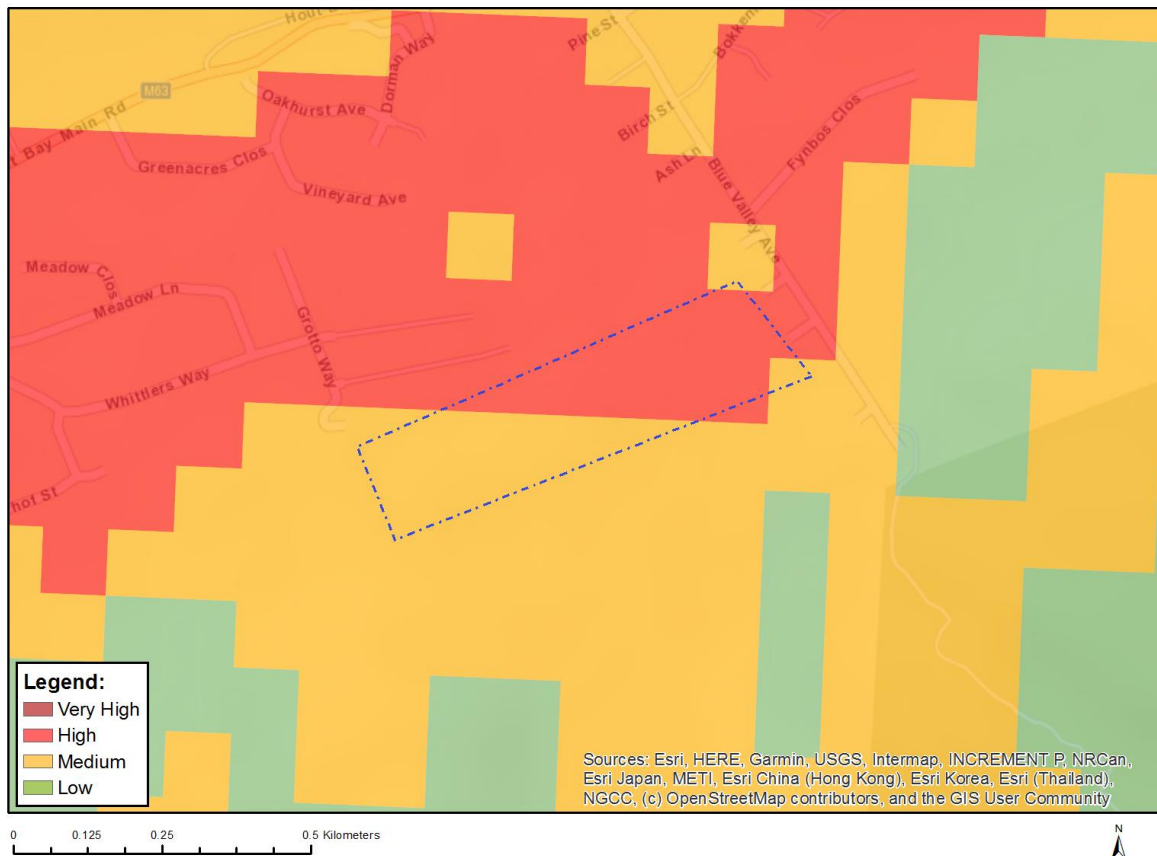
No	Specialist assessment	Assessment Protocol
1	Landscape/Visual Impact Assessment	https://screening.environment.gov.za/ScreeningDownloads/AssessmentProtocols/Gazetted_General_Requirement_Assessment_Protocols.pdf
2	Archaeological and Cultural Heritage Impact	https://screening.environment.gov.za/ScreeningDownloads/AssessmentProtocols/Gazetted_General_Requirement_Assessment_Protocols.pdf

	Assessment	rotocols.pdf
3	Palaeontology Impact Assessment	https://screening.environment.gov.za/ScreeningDownloads/AssessmentProtocols/Gazetted_General_Requirement_Assessment_Protocols.pdf
4	Terrestrial Biodiversity Impact Assessment	https://screening.environment.gov.za/ScreeningDownloads/AssessmentProtocols/Gazetted_Terrestrial_Biodiversity_Assessment_Protocols.pdf
5	Aquatic Biodiversity Impact Assessment	https://screening.environment.gov.za/ScreeningDownloads/AssessmentProtocols/Gazetted_Aquatic_Biodiversity_Assessment_Protocols.pdf
6	Hydrology Assessment	https://screening.environment.gov.za/ScreeningDownloads/AssessmentProtocols/Gazetted_General_Requirement_Assessment_Protocols.pdf
7	Socio-Economic Assessment	https://screening.environment.gov.za/ScreeningDownloads/AssessmentProtocols/Gazetted_General_Requirement_Assessment_Protocols.pdf
8	Plant Species Assessment	https://screening.environment.gov.za/ScreeningDownloads/AssessmentProtocols/Gazetted_Plant_Species_Assessment_Protocols.pdf
9	Animal Species Assessment	https://screening.environment.gov.za/ScreeningDownloads/AssessmentProtocols/Gazetted_Animal_Species_Assessment_Protocols.pdf

Results of the environmental sensitivity of the proposed area.

The following section represents the results of the screening for environmental sensitivity of the proposed site for relevant environmental themes associated with the project classification. It is the duty of the EAP to ensure that the environmental themes provided by the screening tool are comprehensive and complete for the project. Refer to the disclaimer.

MAP OF RELATIVE AGRICULTURE THEME SENSITIVITY

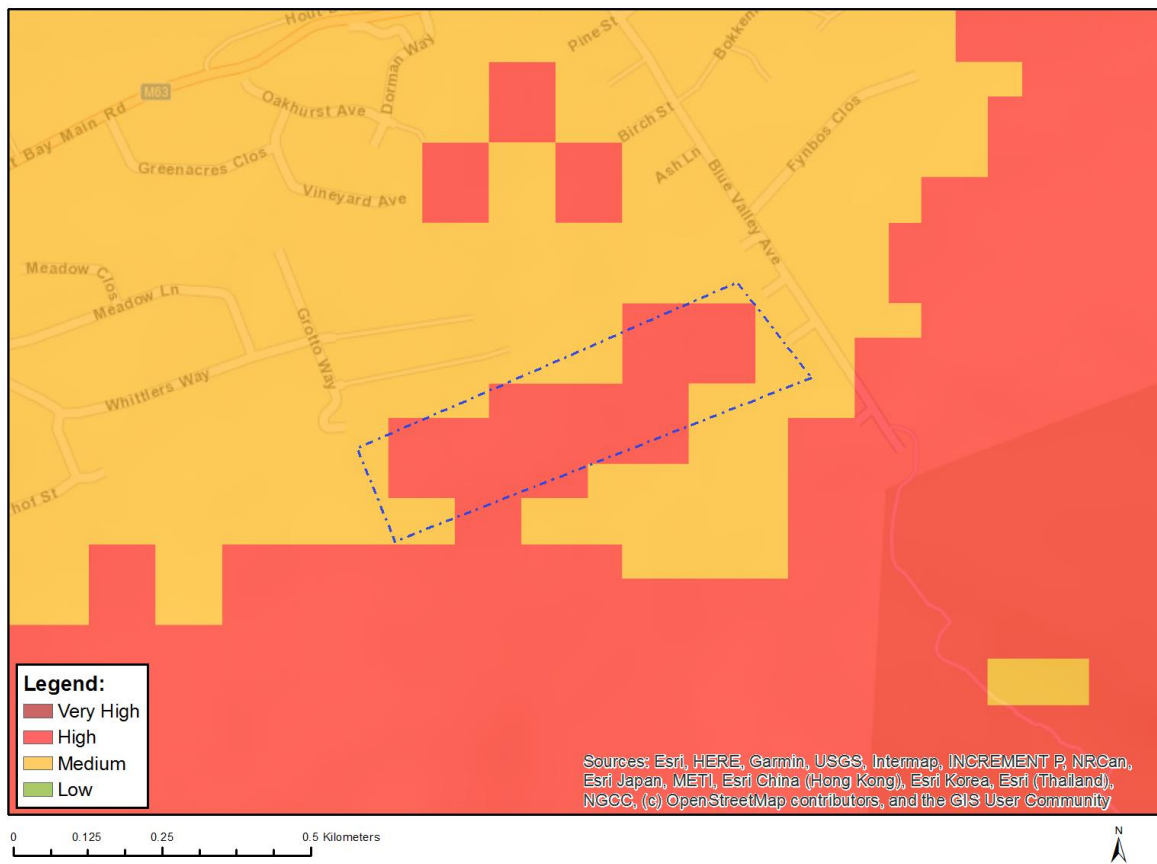


Very High sensitivity	High sensitivity	Medium sensitivity	Low sensitivity
	X		

Sensitivity Features:

Sensitivity	Feature(s)
High	Land capability;09. Moderate-High/10. Moderate-High
Medium	Land capability;06. Low-Moderate/07. Low-Moderate/08. Moderate

MAP OF RELATIVE ANIMAL SPECIES THEME SENSITIVITY



Where only a sensitive plant unique number or sensitive animal unique number is provided in the screening report and an assessment is required, the environmental assessment practitioner (EAP) or specialist is required to email SANBI at eiadaterequests@sanbi.org.za listing all sensitive species with their unique identifiers for which information is required. The name has been withheld as the species may be prone to illegal harvesting and must be protected. SANBI will release the actual species name after the details of the EAP or specialist have been documented.

Very High sensitivity	High sensitivity	Medium sensitivity	Low sensitivity
	X		

Sensitivity Features:

Sensitivity	Feature(s)
High	Aves-Falco biarmicus
High	Aves-Sarothrura affinis
Medium	Amphibia-Sclerophrys pantherina
Medium	Aves-Circus maurus
Medium	Invertebrate-Conocephalus peringueyi

MAP OF RELATIVE AQUATIC BIODIVERSITY THEME SENSITIVITY

Unable to obtain map image.

Very High sensitivity	High sensitivity	Medium sensitivity	Low sensitivity
X			

Sensitivity Features:

Sensitivity	Feature(s)
Very High	ESA 1: Aquatic
Very High	SWSA (SW) _Table Mountain

MAP OF RELATIVE ARCHAEOLOGICAL AND CULTURAL HERITAGE THEME SENSITIVITY

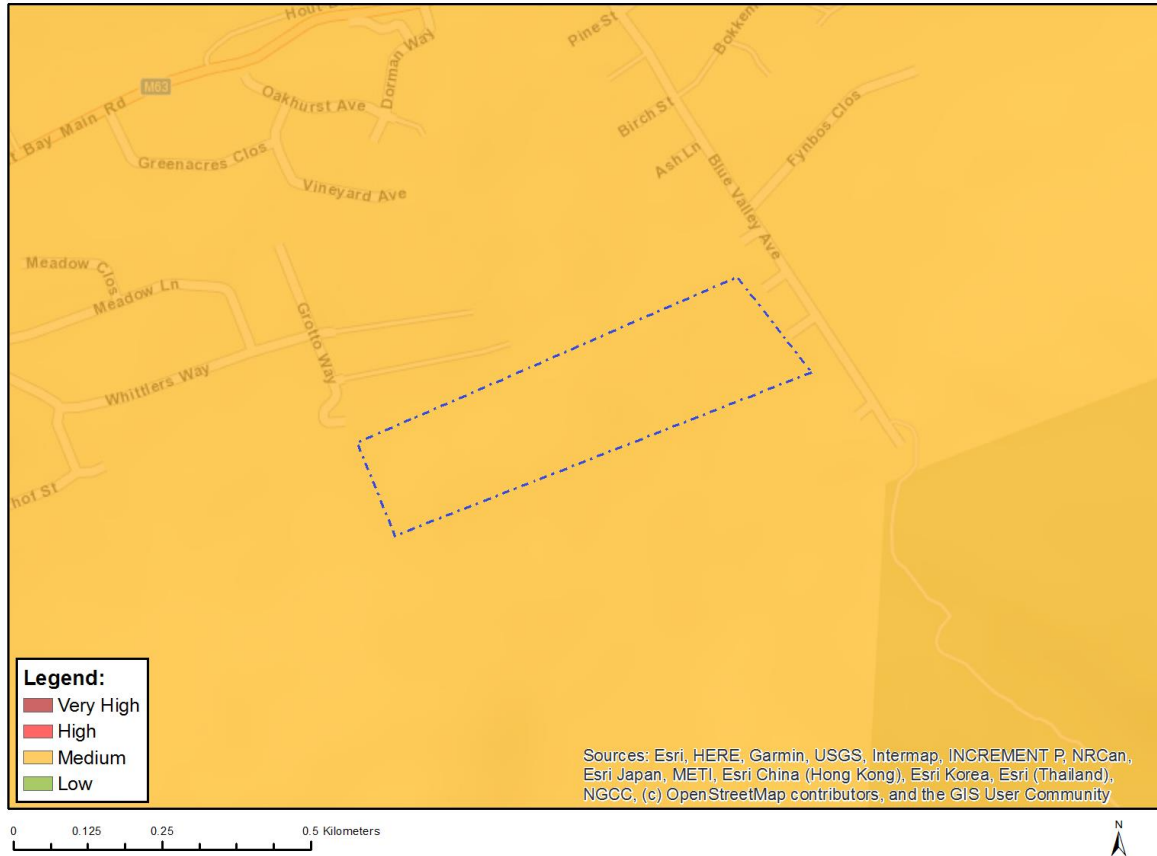
Unable to obtain map image.

Very High sensitivity	High sensitivity	Medium sensitivity	Low sensitivity
X			

Sensitivity Features:

Sensitivity	Feature(s)
Very High	Within 2km of a Grade II Heritage site

MAP OF RELATIVE CIVIL AVIATION THEME SENSITIVITY

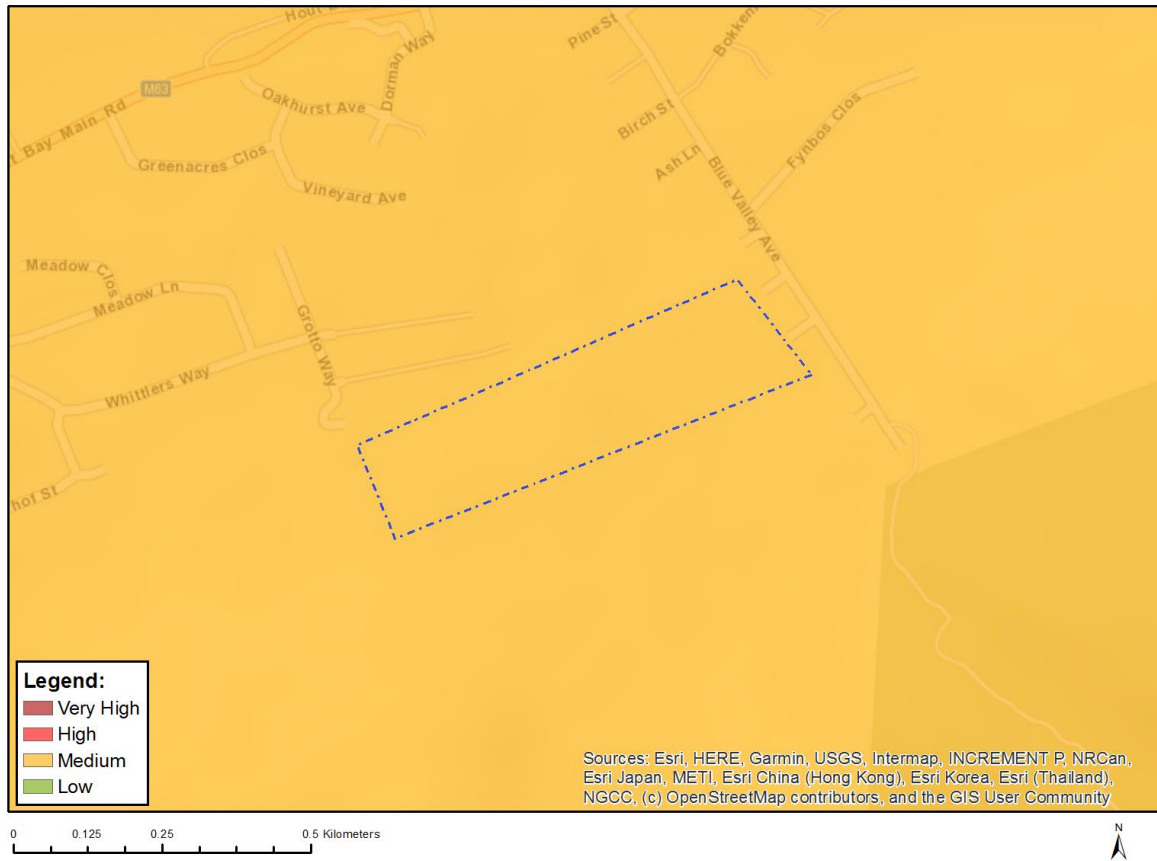


Very High sensitivity	High sensitivity	Medium sensitivity	Low sensitivity
		X	

Sensitivity Features:

Sensitivity	Feature(s)
Medium	Within 5 km of an air traffic control or navigation site
Medium	Between 15 and 35 km from a civil aviation radar
Medium	Between 15 and 35 km from a major civil aviation aerodrome

MAP OF RELATIVE DEFENCE THEME SENSITIVITY

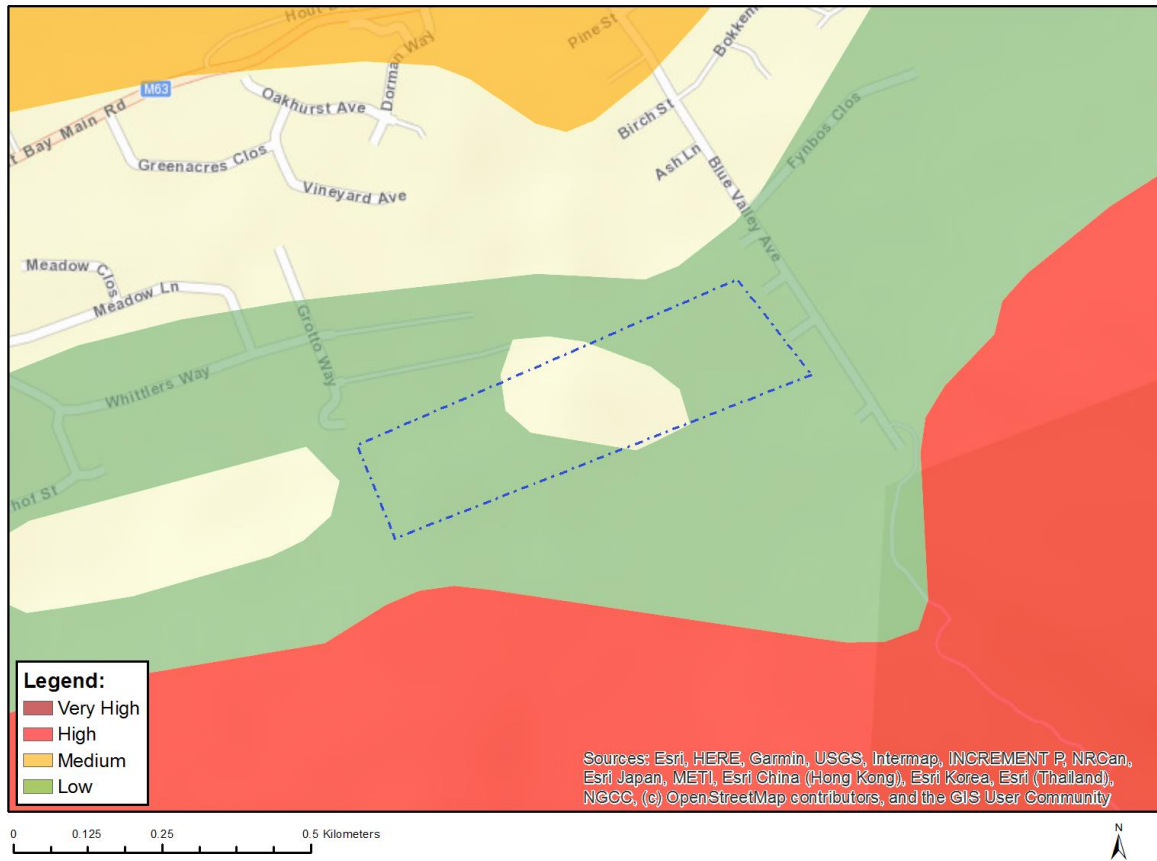


Very High sensitivity	High sensitivity	Medium sensitivity	Low sensitivity
		X	

Sensitivity Features:

Sensitivity	Feature(s)
Medium	Military and Defence Site

MAP OF RELATIVE PALEONTOLOGY THEME SENSITIVITY



Very High sensitivity	High sensitivity	Medium sensitivity	Low sensitivity
			X

Sensitivity Features:

Sensitivity	Feature(s)
Low	Features with a Low paleontological sensitivity

MAP OF RELATIVE PLANT SPECIES THEME SENSITIVITY

Unable to obtain map image.

Where only a sensitive plant unique number or sensitive animal unique number is provided in the screening report and an assessment is required, the environmental assessment practitioner (EAP) or specialist is required to email SANBI at eiadatarequests@sanbi.org.za listing all sensitive species with their unique identifiers for which information is required. The name has been withheld as the species may be prone to illegal harvesting and must be protected. SANBI will release the actual species name after the details of the EAP or specialist have been documented.

Very High sensitivity	High sensitivity	Medium sensitivity	Low sensitivity
		X	

Sensitivity Features:

Sensitivity	Feature(s)
Low	Low Sensitivity
Medium	Lampranthus curvifolius
Medium	Lampranthus filicaulis
Medium	Lampranthus promontorii
Medium	Lampranthus spiniformis
Medium	Antimima aristulata
Medium	Erepsia patula
Medium	Erepsia ramosa
Medium	Erepsia forficata
Medium	Ruschia geminiflora
Medium	Ruschia promontorii
Medium	Ruschia rubricaulis
Medium	Amphithalea imbricata
Medium	Xiphotheca lanceolata
Medium	Psoralea fascicularis
Medium	Liparia parva
Medium	Liparia splendens subsp. splendens
Medium	Liparia laevigata
Medium	Indigofera candolleana
Medium	Indigofera filiformis
Medium	Indigofera psoraloides
Medium	Aspalathus araneosa
Medium	Aspalathus barbata
Medium	Aspalathus capensis
Medium	Aspalathus capitata
Medium	Aspalathus chenopoda subsp. chenopoda

Medium	<i>Aspalathus humilis</i>
Medium	<i>Aspalathus incurva</i>
Medium	<i>Aspalathus lotoides</i> subsp. <i>lotoides</i>
Medium	<i>Aspalathus macrantha</i>
Medium	<i>Aspalathus psoraleoides</i>
Medium	<i>Otholobium fruticans</i>
Medium	<i>Lebeckia meyeriana</i>
Medium	<i>Lebeckia plukenetiana</i>
Medium	Sensitive species 986
Medium	Sensitive species 48
Medium	<i>Podalyria argentea</i>
Medium	<i>Podalyria sericea</i>
Medium	<i>Audouinia capitata</i>
Medium	<i>Staavia glutinosa</i>
Medium	<i>Leucadendron argenteum</i>
Medium	<i>Leucadendron coniferum</i>
Medium	<i>Leucadendron macowanii</i>
Medium	<i>Leucadendron strobilinum</i>
Medium	<i>Leucospermum conocarpodendron</i> subsp. <i>conocarpodendron</i>
Medium	<i>Leucospermum hypophyllocarpodendron</i> subsp. <i>hypophyllocarpodendron</i>
Medium	<i>Protea burchellii</i>
Medium	<i>Mimetes fimbriifolius</i>
Medium	<i>Mimetes hirtus</i>
Medium	<i>Diastella divaricata</i> subsp. <i>divaricata</i>
Medium	<i>Serruria collina</i>
Medium	<i>Serruria cyanoides</i>
Medium	<i>Serruria glomerata</i>
Medium	<i>Serruria trilopha</i>
Medium	<i>Serruria villosa</i>
Medium	<i>Roella decurrens</i>
Medium	<i>Treichelia dodii</i>
Medium	<i>Microdon nitidus</i>
Medium	<i>Ehrharta setacea</i> subsp. <i>uniflora</i>
Medium	<i>Lobostemon capitatus</i>
Medium	<i>Aristea pauciflora</i>
Medium	Sensitive species 533
Medium	<i>Geissorhiza bonaspei</i>
Medium	<i>Geissorhiza humilis</i>
Medium	<i>Ixia monadelpha</i>
Medium	Sensitive species 885
Medium	Sensitive species 775
Medium	Sensitive species 1140
Medium	<i>Lobelia eckloniana</i>
Medium	<i>Erica amoena</i>
Medium	<i>Erica annectens</i>
Medium	<i>Erica brachialis</i>
Medium	<i>Erica capillaris</i> var. <i>capillaris</i>
Medium	<i>Erica depressa</i>
Medium	<i>Erica diosmifolia</i>
Medium	<i>Erica haematocodon</i>
Medium	<i>Erica halicacaba</i>
Medium	<i>Erica marifolia</i>
Medium	<i>Erica nevillei</i>
Medium	<i>Erica patersonii</i>
Medium	<i>Erica pyxidiflora</i>
Medium	<i>Erica abietina</i> subsp. <i>constantiana</i>
Medium	<i>Brachysiphon fucatus</i>
Medium	<i>Stylapterus fruticosus</i>
Medium	<i>Hermannia micrantha</i>
Medium	<i>Villarsia goldblattiana</i>

Medium	Sensitive species 493
Medium	<i>Adenogramma rigida</i>
Medium	<i>Wachendorfia brachyandra</i>
Medium	<i>Hessea cinnamomea</i>
Medium	<i>Hermas lanata</i>
Medium	<i>Centella caespitosa</i>
Medium	Sensitive species 133
Medium	<i>Tetraria paludosa</i>
Medium	<i>Isolepis venustula</i>
Medium	<i>Isolepis leucoloma</i>
Medium	<i>Ficinia anceps</i>
Medium	<i>Ficinia elatior</i>
Medium	<i>Ficinia fastigiata</i>
Medium	<i>Ficinia micrantha</i>
Medium	<i>Ficinia pinguior</i>
Medium	<i>Ficinia rigida</i>
Medium	<i>Thamnochortus levynsiae</i>
Medium	<i>Thamnochortus nutans</i>
Medium	<i>Restio communis</i>
Medium	<i>Restio duthieae</i>
Medium	<i>Restio harveyi</i>
Medium	<i>Restio papillosus</i>
Medium	Sensitive species 1277
Medium	Sensitive species 985
Medium	Sensitive species 384
Medium	Sensitive species 266
Medium	Sensitive species 460
Medium	Sensitive species 1139
Medium	Sensitive species 373
Medium	<i>Pterygodium cruciferum</i>
Medium	<i>Pterygodium microglossum</i>
Medium	<i>Heliophila promontorii</i>
Medium	<i>Heliophila pusilla</i> var. <i>lanceolata</i>
Medium	<i>Lepidium pinnatum</i>
Medium	<i>Gnidia humilis</i>
Medium	<i>Lachnaea uniflora</i>
Medium	<i>Felicia cymbalarioides</i>
Medium	<i>Senecio verbascifolius</i>
Medium	<i>Athanasia capitata</i>
Medium	<i>Gerbera wrightii</i>
Medium	Sensitive species 1042
Medium	<i>Stoebe rosea</i>
Medium	<i>Helichrysum fruticans</i>
Medium	<i>Cullumia squarrosa</i>
Medium	<i>Osmitopsis dentata</i>
Medium	<i>Agathosma hookeri</i>
Medium	<i>Agathosma lanceolata</i>
Medium	<i>Adenandra villosa</i> subsp. <i>biseriata</i>
Medium	<i>Adenandra villosa</i> subsp. <i>sonderi</i>
Medium	<i>Adenandra villosa</i> subsp. <i>umbellata</i>
Medium	<i>Macrostylis villosa</i> subsp. <i>villosa</i>
Medium	<i>Cliffortia hirta</i>
Medium	<i>Muraltia comptonii</i>
Medium	<i>Muraltia curvipetala</i>
Medium	<i>Muraltia diabolica</i>
Medium	<i>Cytinus capensis</i>
Medium	Sensitive species 850
Medium	Sensitive species 811
Medium	Sensitive species 1030
Medium	Sensitive species 183

Medium	Wurmbea hiemalis
Medium	Wurmbea inusta
Medium	Triglochin bulbosa subsp. tenuifolia
Medium	Phylica dioica
Medium	Phylica plumosa var. squarrosa
Medium	Phylica schlechteri
Medium	Aloiampelos commixta
Medium	Codonorhiza azurea
Medium	Skiatophytum skiatophytoides
Medium	Lampranthus glaucus
Medium	Xiphotheca reflexa
Medium	Psoralea alata
Medium	Protea scolymocephala
Medium	Ophioglossum bergianum
Medium	Sensitive species 599
Medium	Elegia squamosa
Medium	Restio paludosus
Medium	Pachites bodkinii
Medium	Lachnaea grandiflora

MAP OF RELATIVE TERRESTRIAL BIODIVERSITY THEME SENSITIVITY



Very High sensitivity	High sensitivity	Medium sensitivity	Low sensitivity
X			

Sensitivity Features:

Sensitivity	Feature(s)
Very High	Cape Floral Region Protected Areas
Very High	ESA 1
Very High	SWSA (SW) _Table Mountain
Very High	National Protected Area Expansion Strategy (NPAES)
Very High	SANParks (Buffer)_Table Mountain National Park
Very High	CR_Peninsula Granite Fynbos

OFFICIAL